



TENOVA
Innovating Technologies

**Engineered Products
and Services**

tenova.ae

Why Tenova

Established in 2016 in Dubai, UAE, Tenova builds on its leadership's presence in the UAE construction industry since 2004, leveraging extensive experience in delivering world-class building and infrastructure projects in the region. The company positions itself as a value-added service provider, addressing complex engineering challenges. With in-depth knowledge and expertise in product design, engineering development, prototyping, production, logistics, and installations, Tenova delivers intelligent, sustainable, and innovative technological solutions across the Building, Infrastructure, Rail & Marine, and Oil & Gas sectors.

As an ISO 9001:2015 certified company, Tenova benefits from management's strong involvement and expertise in the construction and infrastructure industry since 2001, allowing it to deliver specialty products and services both locally and regionally.

**we
add
value**



PRECAST CONCRETE COMPOSITES

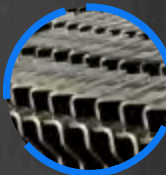


ENGINEERED STONE



GFRC/GRP/METAL COMPOSITES

Glass Fibre Reinforced Concrete/Plastic



METAL COMPONENTS

Steel and metal Components



ROBOTIC INSPECTION SYSTEM



PROJECT REFERENCES

Our Key Differentiators

- **Intelligent, Sustainable Solutions:** Tenova's primary focus is on providing intelligent, sustainable, and technologically advanced products and service solutions.
- **End-to-End Business Model:** We create an end-to-end business model involving our R&D team, manufacturing vendors, supply chain, and customers, thereby offering an extraordinary solution experience with added business value.
- **Creativity and Innovation:** We are committed to being creative and highly innovative, introducing disruptive solutions for challenging and complex end-use requirements.
- **Agile and Lean Methodologies:** We adapt highly agile and lean project delivery methodologies with a strong commitment to meeting critical deadlines.
- **Customer Ownership:** We take ownership on behalf of our customers, adding value to each project and business transaction we undertake.

Our Vision: To be a global leader in providing specialized, innovative services and solutions.

Our Mission: To deliver high-quality, innovative, and cost-effective solutions to the region.

Project Management, Contracts Management, Critical Planning for Integration of Engineering, Production and Installations.

- ▶ **Stakeholder Collaboration:** Effective collaboration with all stakeholders in proposing product and service solutions.
- ▶ **Program/Schedule Management:** Managing schedules and programs for interrelated works.

Engineering & Prototyping

- ▶ **Design and Modelling:** Engineering, BIM modeling, virtual design construction, and 2D/3D renders of the design and technical details of complete systems and solutions.
- ▶ **Drawing Coordination:** Ensuring that drawings are fully coordinated with other services and system elements.
- ▶ **Method Statements and Policies:** Developing method statements, conducting risk analyses, and adhering to HSE policies.

- ▶ **Procurement and QA/QC:** Implementing stringent procurement and QA/QC policies from raw material selection through the production process to the final end product.

- ▶ **Mock-up Installations:** Conducting mock-up installations as required by the project.

Production, Installations, Quality Control and Handovers

- ▶ **Experienced Management:** A highly experienced management team ensures that production, supply, and installations meet all schedule, quality, and safety assurance/control requirements.
- ▶ **Final Product Assurance:** Ensuring final products and services meet all requirements.
- ▶ **Warranties:** Providing material and workmanship warranties as per industry



Precast Concrete Composites

PRECAST CONCRETE COMPOSITES

Precast Manufacturing – Mould Engineering/Fabrication, Trial Mix, Prefab assembly, Prototyping, Mass Production/ Planning, Logistics & Installations.

Engineering management includes inculcating BIM s/w, Procon design s/w.etc for design, detail and shop drawings.

Utilizing state of the art ISO Certified production facility using tilting tables, manual & table vibrators, concrete batching and chuting systems ensuring highest QA/QC controls maintained for each production batch.

Highlighting Project:

Etihad Rail Rig Crossing Precast/Composite System

OUR PRIMARY APPLICATION AREAS

Rail Rig Crossings

Cast Stone Benches

UG Infra Elements

Marine Ramps

Defence Walls

Foundation Elements



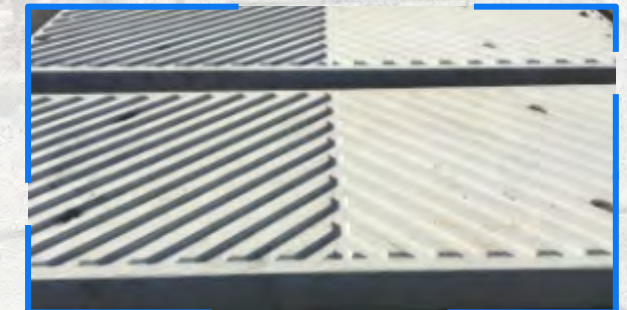
Rail Rig Crossing System



Road Crossing Block



Cast-stone Benches



Marine Ramps



Sinker Blocks



Trough & Cover

A photograph of a modern building's exterior. The facade is primarily composed of light-colored, rectangular stone tiles arranged in a staggered pattern. A large glass door with a dark frame is visible in the center. To the left of the door, there are two white rectangular planters containing green shrubs. A white bicycle is parked on the right side of the image. The sky is visible through the glass door.

Engineered Stone

ENGINEERED STONE

EXCEPTIONAL RUSTIC & LUXURIOUS ARCHITECTURAL AESTHETICS • WORLD'S HIGHEST QUALITY CULTURED STONE FINISH

(Avg. 10–20% value additions to the property value when introducing stone veneer facade to architectural elevations)

Introducing for the first time in the UAE/Middle East with local production: • Sustainable • Cost efficient

>> Most popular Luxury Facade elements in North America, Europe, Russia, Australasia.

[**▼ DOWNLOAD STONE CATALOGUE**](#)

cladall.tenova.ae

PRIMARY APPLICATION AREAS

External Building
Facades

Interior Cladding

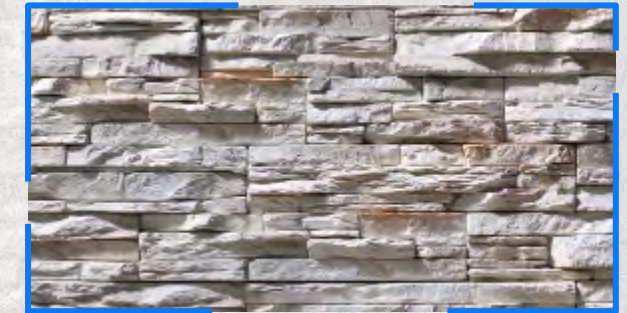
Feature Walls

Boundary Wall Cladding

Column Cladding



Ledgestone Series 1



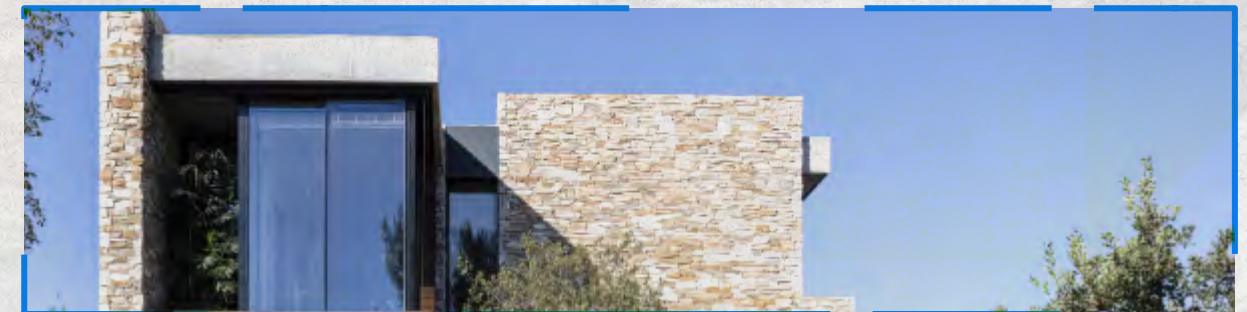
Ledgestone Series 2



Fieldstone Series 1



Fieldstone Series 2





GFRC/GRP/Metal/ Composites

GFRC/GRP/METAL/COMPOSITES

GFRC/GRP Manufacturing - Reverse Mould Engineering/ Fabrication, Trial Mix, Prefab assembly, Prototyping, Mass Production/Planning, Logistics & Installations.

Engineering management includes inculcating BIM s/w, Procon design s/w.etc for design, detail and shop drawings.

Utilising state of the art ISO Certified production facility using Spraying Machines, Lamination Guns, batching and chuting systems ensuring highest QA/QC controls maintained for each production batch.

[**▼ DOWNLOAD GFRC/GRP CATALOGUE**](#)

OUR PRIMARY APPLICATION AREAS

Facades
Planters
Domes
Acoustics

Tanks
Structural Profiles
Electrical Enclosures
Utilities

**OUR INSTALLATION PARTNER -
AVS LINE TECHNICAL SERVICES LLC.**



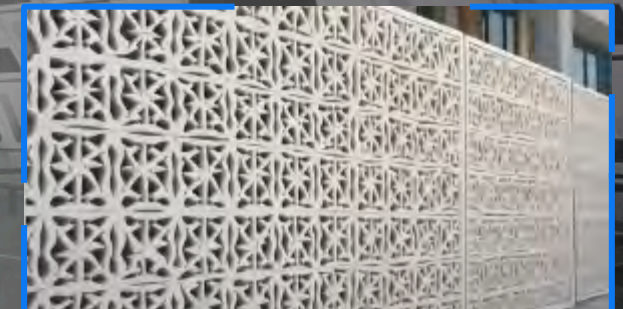
Castone Planters



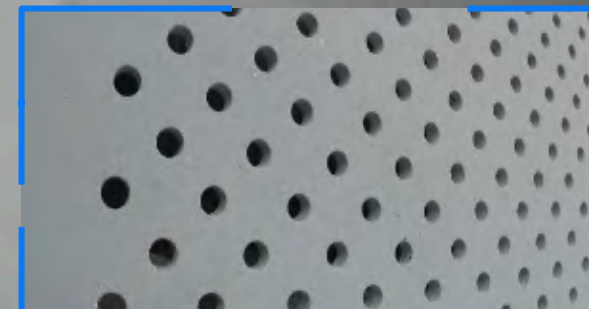
Facade Elements



Domes



Decorative Elements



Acoustic Panels



Tunnel Lining

GRP/COMPOSITES



Gratings



Cross Ties



Cable Management



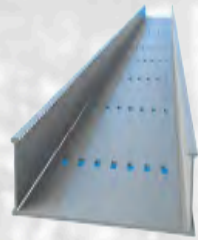
Silos



Degreaser Tanks



Oil Separator



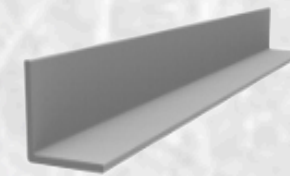
Cable Trays



DB Enclosures



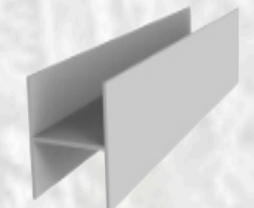
Clips/Connections



Angle



I Beam



H Beam



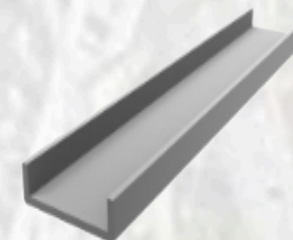
UG Enclosures



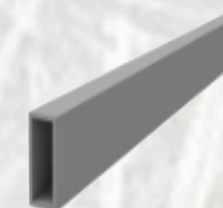
Panel Tanks



Storage Tanks



Channel



RHS



SHS

*All proprietary product data sheet and specifications will be shared upon request



Metal Components

METAL COMPONENTS

Our services include:

- Sourcing raw materials under a stringent QA process
- Design/engineering and shop drawing
- Material sampling
- Prototyping
- Mass/series production
- Logistics and supply

We allocate and utilize multiple ISO-certified production facilities partnered with us to meet any production volume and delivery requirements. Our state-of-the-art production infrastructure includes CAD/CAM integrations with inline production processes. The infrastructure features multi axes CNC lathes, drilling and milling machines, planers, broaching and honing machines, water jet, laser, and plasma cutting, robotic welding machines, and coating processes.

OUR PRIMARY APPLICATION AREAS

Rail Rig Components

Oil & Gas Parts

Precision Auto/Space Components

Metal Embeds



Rig Crossing Metal Parts



Rail Track Elements



O&G Components



Metal Embeds

ENQUIRIES @

+97142999145
sales@tenova.ae

A close-up, slightly blurred image of a robotic arm. The arm is dark-colored and features a large, cylindrical camera lens in the center. To the left of the camera, there is a smaller, circular sensor or light. The background is a plain, light-colored surface.

Robotic Inspection System

ROBOTIC INSPECTION SYSTEMS

Tenova has established partnerships with multiple world-leading manufacturers across the globe, bringing the most advanced robotic inspection and proprietary systems and solutions to the region. These are integrated with state-of-the-art software and hardware to generate customized videos, images, and project reports, including deflection, inclination, defect measurements, ovality, and more.

Our services include identifying the end-use inspection and operation requirements and proposing the most value-added, customized integrated robotic inspection solutions to meet those specific needs.

Key selected customers we served:

♦ DP WORLD ♦ REPUBLIC OF IRAQ ♦ DUTCO/DBB

OUR PRIMARY APPLICATION AREAS

O&G Pipes

Military/Defence

Drainage/Storm water
Ducts/Pipes

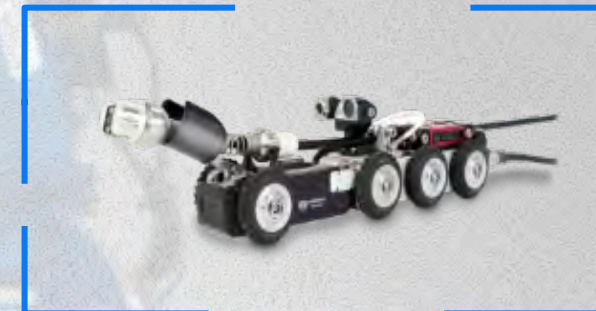
Building Services



Mainline System



Push Rod System



Lateral System



ATEX System

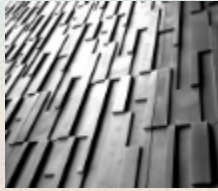





Vertical System

**VERSATILE
AGILE
ROBUST**

KEY PROJECT REFERENCES

Scope of Works/Project	Consultant	Contractor	Owner	Picture
Engineering, Manufacturing & Supply, Mock up installation, of Specialised Rail Rig Crossing Precast/Metal /Composite Systems.	Jacobs	JD Rail	Etihad Rail	
Engineering, Manufacturing & Supply/install, of HPC (High Performance Concrete) Facade Panels	Lacasa	Condor	TECOM/ Meta	
Engineering, Manufacturing & Supply/install, of Glass Reinforced Cladding Facade panels	RMJM	AFC	Al Sharq Investments	
Engineering, Manufacturing & Supply/install, of Glass Reinforced Cladding Facade panels	WS Atkins	Habtoor Leighton	Habtoor Group	

Scope of Works/ Project	Consultant	Contractor	Owner	Picture
Engineering, manufacture and supply/install of various HPC cladding to Villas, Commercial buildings	NA	NA	Private Owners	
GRC/Cement Fibre/ ACP Facade for Dwight School and Brighton College (Al Barsha South)	NEB	Airolink	Bloom Educations	
Steel/Metal Architectural Facade for Art of Living Mall (Al Barsha)	Lacasa	Airolink	MMS/MAG	
Facade for Ski Dubai & Car Park (Mall of Emirates)	Hyder/ Holford	Laing O Rourke	MAFI	



**we
add
value**

serving

Building Infrastructure Industrial Sectors

(An ISO 9001:2015 Certified Organization)

Tenova - Innovating Technologies
PO Box 341548, Dubai, UAE
T: +971 4 2999145
F: +971 4 2999146
E: reachus@tenova.ae

tenova.ae